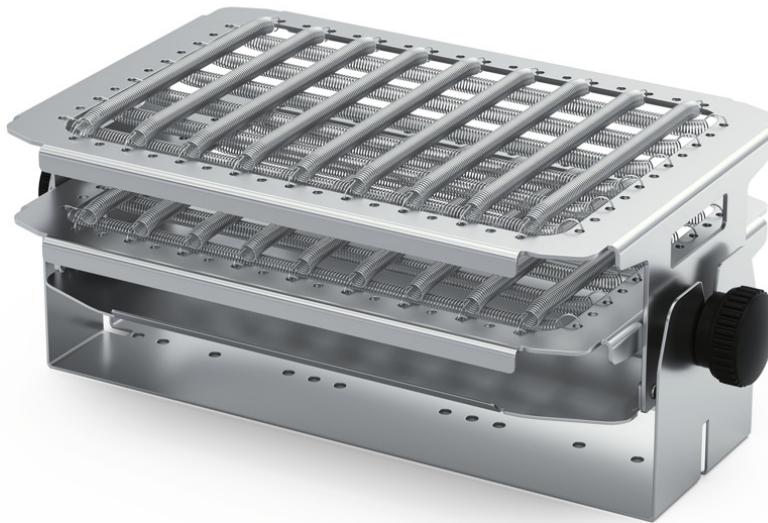




designed for scientists



## **IO R 2.10 Adjustable tube rack**

/// Data Sheet

The adjustable tube rack IO R 2.10 can be attached to all IKA orbital and horizontal shakers in combination with the AS fixing clamp attachments as well as to the SP shaking platforms of the INC 125 FS incubator series.. Depending on the diameter, it offers space for up to 60 sample vessels. The innovative spring fixation allows a tube diameter range from 8 to 30 mm.

The knobs on the side make it easy to adjust the shaking angle of the samples. This allows adjustment of the gas-accessible surface of the samples in the tubes. The sample holder can be quickly released from the base using the knobs to facilitate transportation to the laboratory bench. The rack is made of stainless steel.



designed for scientists

Number of sample tubes:

8 – 11 mm diameter: 60 pcs.

12 – 15 mm diameter: 40 pcs.

15 – 18 mm diameter: 28 pcs.

18 – 21 mm diameter: 20 pcs.

22 – 26 mm diameter: 15 pcs.

26 – 30 mm diameter: 15 pcs.

Number of racks (IO R 2.10) per shaking platform:

AS 130.2: 1 rack

AS 260.2: 2 racks

AS 501.4: 4 racks

AS 4000.2: 4 racks

SP 20 / SP 25: 3 racks



designed for scientists

### Technical Data

Dimensions (W x H x D) [mm]	150 x 100 x 265
Weight [kg]	1.1
Permissible ambient temperature max. [°C]	100



# WolfLabs

**Pricing on any accessories shown can be found by keying the part number into the search box on our website.**

The specifications listed in this brochure are subject to change by the manufacturer and therefore cannot be guaranteed to be correct. If there are aspects of the specification that must be guaranteed, please provide these to our sales team so that details can be confirmed.

**[www.wolflabs.co.uk](http://www.wolflabs.co.uk)**

**Tel : 01759 301142**

**Fax : 01759 301143**

**[sales@wolflabs.co.uk](mailto:sales@wolflabs.co.uk)**

Please contact us if this literature doesn't answer all your questions.